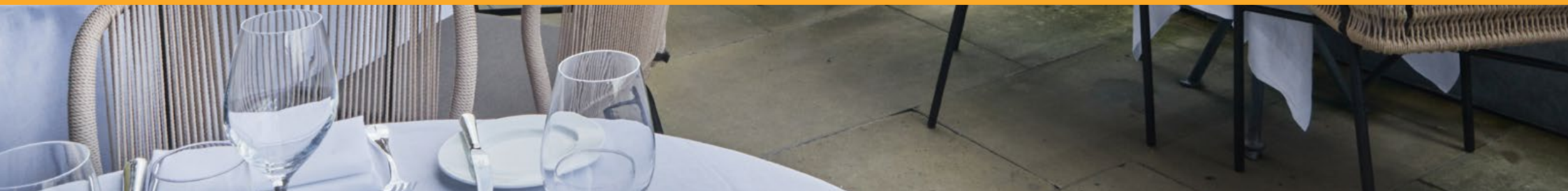




EVENTS *at* LE PONT DE LA TOUR



THE ULTIMATE RIVERSIDE DESTINATION

As one of the most recognisable names in the pantheon of great London restaurants, Le Pont de la Tour has played host to many a big name and many an important occasion. The restaurant draws inspiration from classic French cuisine with unexpected but thoughtful twists whilst the bar has a more laid-back feel offering an exciting menu of hors d'oeuvres and sharing plates. And lest we forget, the wonderful terrace and famous uninterrupted views of Tower Bridge...

Inspired by the French cruise liner SS Normandie, the décor is rich and sleek featuring nautical elements throughout with a grown up twist, evoking roaring twenties' glamour, when the Normandie was first conceived, further emphasised by art deco upholstery and furniture.

The terrace boasts a stylish, chill out lounge bar and an outdoor dining space for the restaurant, both of which are open all year round. Whether it's a corporate dinner, birthday party, wedding or private wine tasting, we have a dedicated and experienced team to ensure that every detail of your event is catered for.





PRIVATE DINING



The Salon Privé lies at the far end of the main restaurant accessed via the Wine Cellar; a wall of glass divides the two spaces with an impressive display of over 300 bottles of wine.

Capacities

Salon Privé

20 people

Seated breakfast, lunch and dinner

The Semi Private Wine Cellar is the perfect venue if you're looking for something out of the ordinary. Surrounded by some of the finest bottles of wine from around the world, you can enjoy both the buzz of the main restaurant and the exclusivity of this semi-private space.

Wine Cellar

23 people

Seated breakfast, lunch and dinner

30 people

Wine tasting

Our Sommelier Team can offer bespoke wine tastings as an added extra to your event.

All tastings can be tailored around the specific requirements of your group.

40 people

Standing reception



GROUP DINING

From a family celebration to a birthday party or informal corporate dinner, the elegant surroundings and magnificent river views of Le Pont de la Tour offer a unique venue for group dining.

Capacities

Fine Dining Restaurant
From 10 to 50 people

Our Head Chef has created a range of exquisite menus to suit every occasion. Our award-winning sommelier team will be happy to assist you in picking the perfect wines to match.

Inspiration is taken from classic French cuisine whilst highlighting the freshness and provenance of British produce cooked simply and elegantly. Dishes are clean, light and vibrant with the culinary motto of 'less is more'.



Le Pont de la Tour, 36d Shad Thames, London SE1 2YE | 020 7940 1833 | www.lepontdelatour.co.uk/events

 @lepontdelatour |  LePontdeLaTour |  lepontdelatourldn





GROUP ENTERTAINING



Those who prefer a more relaxed setting will discover an exciting bar menu with hors d'oeuvres and sharing plates within our luxurious, lounge style area where you can watch the world go by over a glass of Champagne or a delicious cocktail.

Capacities

Bar
From 30 seated to 80 standing

The View - semi private area
8 people seated 16 standing

Bar Terrace
30 people
Seated

50 people
Standing

The wine list is based around twelve legendary maisons and signature cocktails celebrate the best of France and London. The London-inspired “Shad Thames” concoctions are infused with vanilla, ginger, coriander and cardamom - the same spices once stored in the warehouses around the Butlers Wharf.

Contemporary live music with jazzy influences features on Thursdays, Fridays and Saturdays. Within the bar, we have a raised semi private area called “The View”. The perfect place to indulge in people-watching on the Thames against the spectacularly romantic backdrop of Tower Bridge. Not forgetting the bar terrace at Le Pont de la Tour arguably boasts the best view in London.



EXCLUSIVE HIRE

Le Pont de la Tour can be hired exclusively whether for a celebratory occasion or corporate entertaining.

Our events team are experienced party planners who can assist with the enquiry from concept right through to the event itself and offer supreme knowledge to make your party or event one to remember.

Capacities

Entire venue

110 people

Seated lunch and dinner

300 people

Standing reception including terrace

Restaurant only

110 people

Seated lunch and dinner

230 people

Standing reception including terrace

Bar only

80 people

Standing reception



Le Pont de la Tour, 36d Shad Thames, London SE1 2YE | 020 7940 1833 | www.lepontdelatour.co.uk/events

 @lepontdelatour |  LePontdeLaTour |  lepontdelatourldn





WEDDINGS

Celebrate your wedding in style at Le Pont de la Tour and enjoy the stunning views of its namesake.

Capacities

110 people

Seated with dancefloor

We have a dedicated events team on hand to specially create menus to your specific requirements, offering the finest ingredients, as well as an extensive selection of wines, Champagnes, spirits and cocktails. We will be on hand to assist throughout, from the initial planning stage to the reception itself.


300 people

Standing reception

No detail is too small, so whether you need help sourcing florists, entertainers or transport for the day, our contact list boasts some of the best suppliers in London.

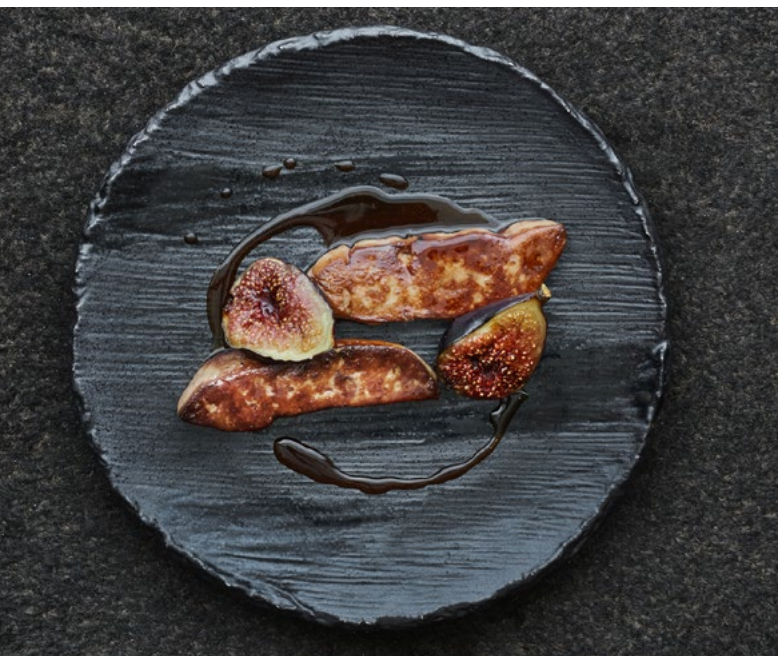


Le Pont de la Tour, 36d Shad Thames, London SE1 2YE | 020 7940 1833 | www.lepontdelatour.co.uk/events

 @lepontdelatour |  LePontdeLaTour |  lepontdelatourldn



A MODERN TWIST ON CLASSIC FRENCH CUISINE



LE PONT DE LA TOUR

Le Pont de la Tour, 36d Shad Thames, London SE1 2YE | 020 7940 1833 | www.lepontdelatour.co.uk/events

[@lepontdelatour](https://twitter.com/lepontdelatour) | [LePontdeLaTour](https://www.facebook.com/LePontdeLaTour) | [lepontdelatourldn](https://www.instagram.com/lepontdelatourldn)